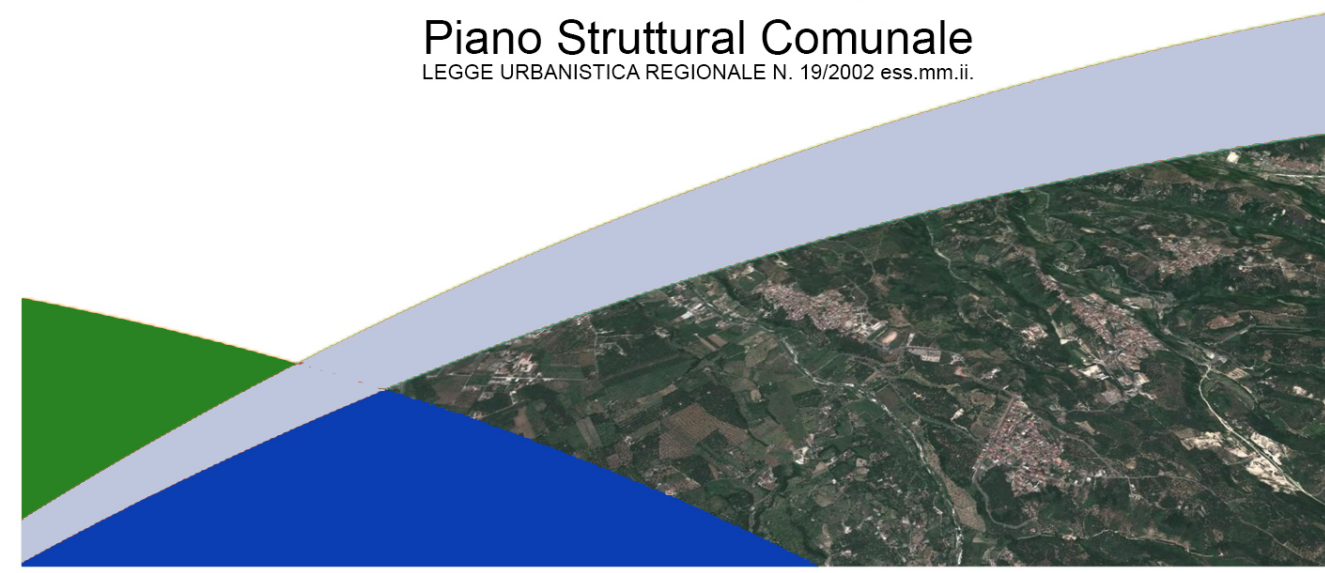




**Comune di Anopia**  
Città Metropolitana di Reggio Calabria  
**P. S. C.**  
Piano Strutturale Comunale  
LEGE URBANISTICA REGIONALE N. 19/2002 esp. mm. l.



Ufficio del Piano  
**Arch. Ivana Macri**  
Area Tecnica

Il Sindaco  
**Alessandro Demarzo**

**DOCUMENTO PRELIMINARE**

**QUADRO CONOSCITIVO**  
QUADRO STRUTTURALE ECONOMICO E MORFOLOGICO

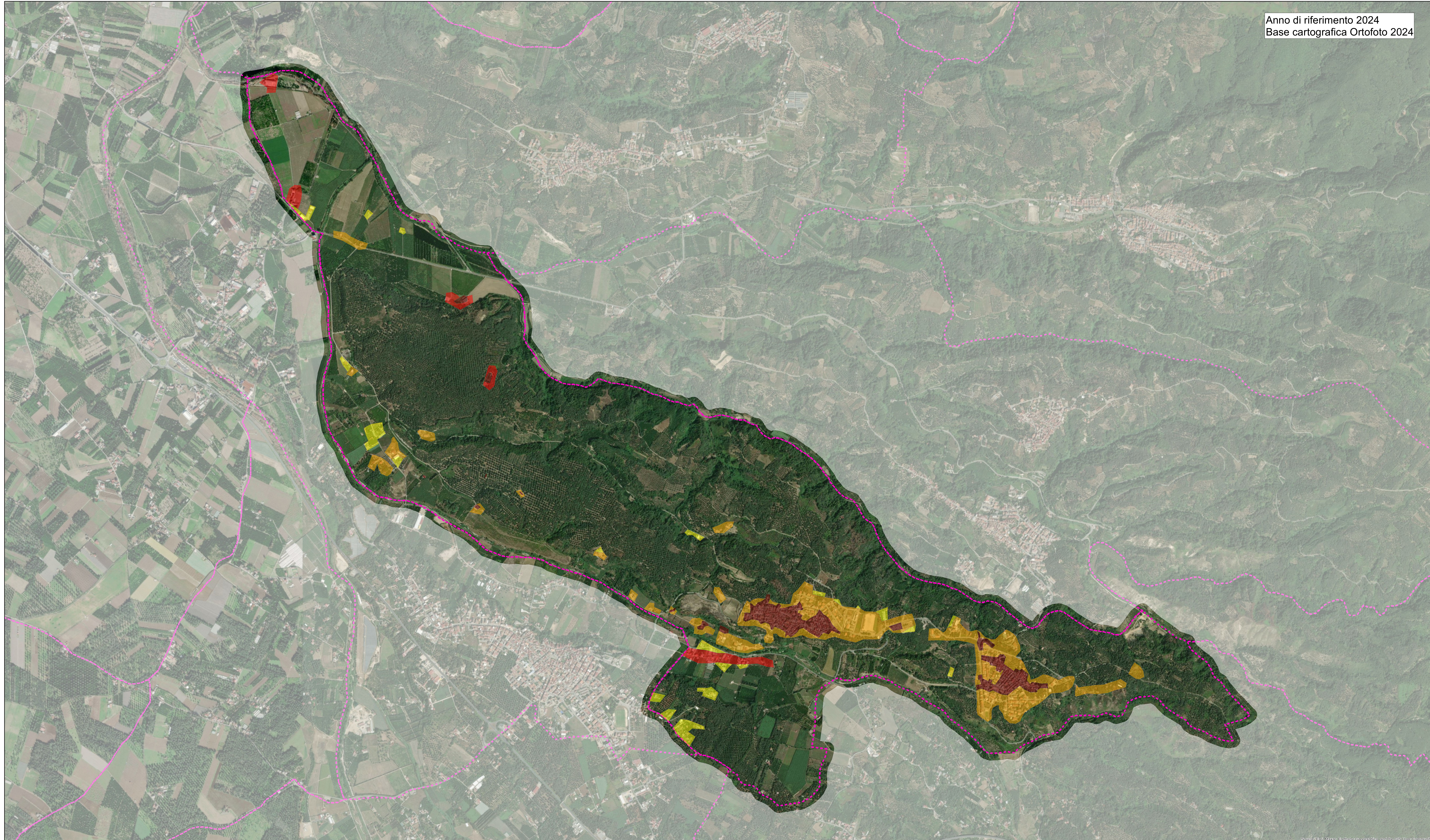
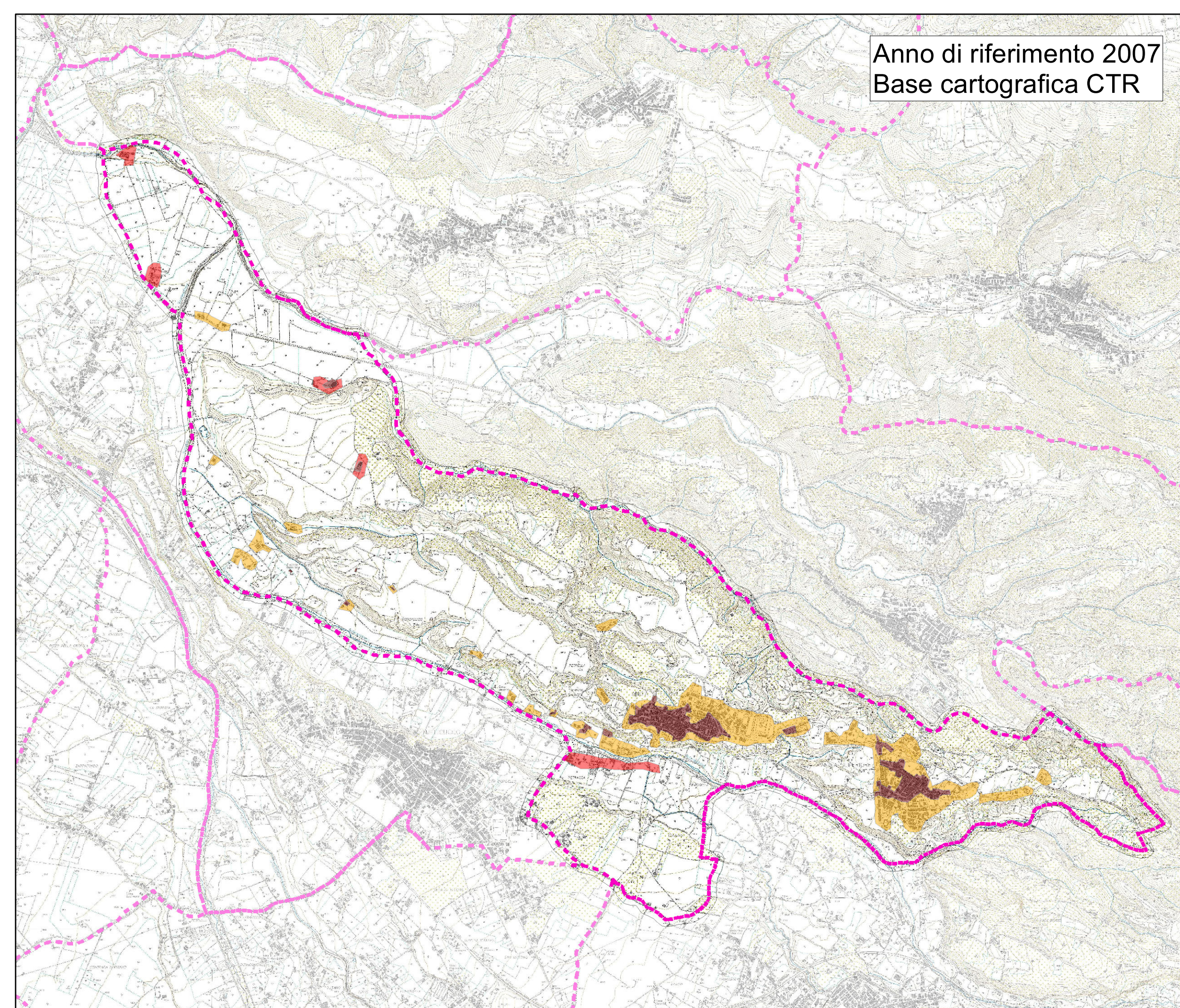
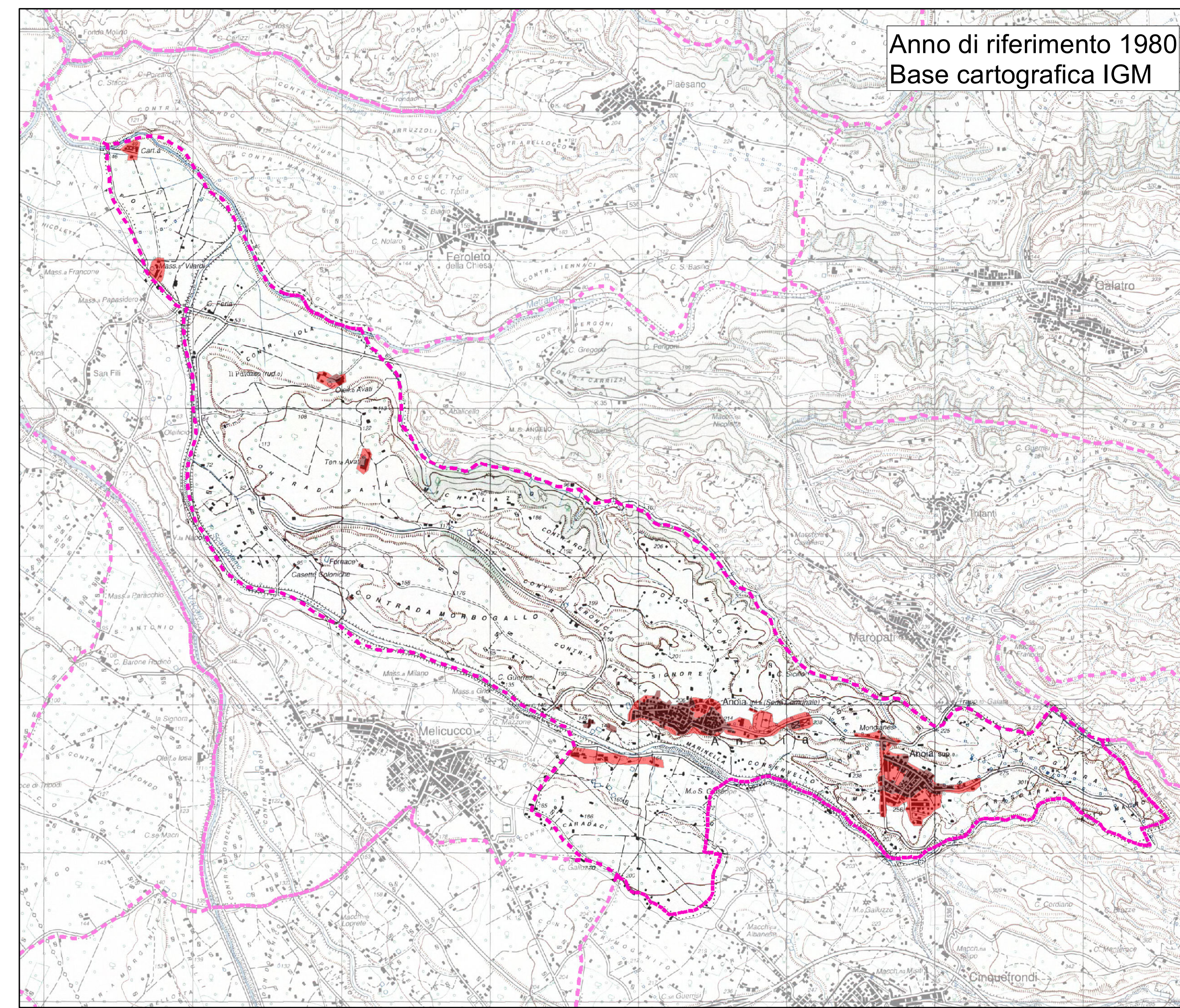
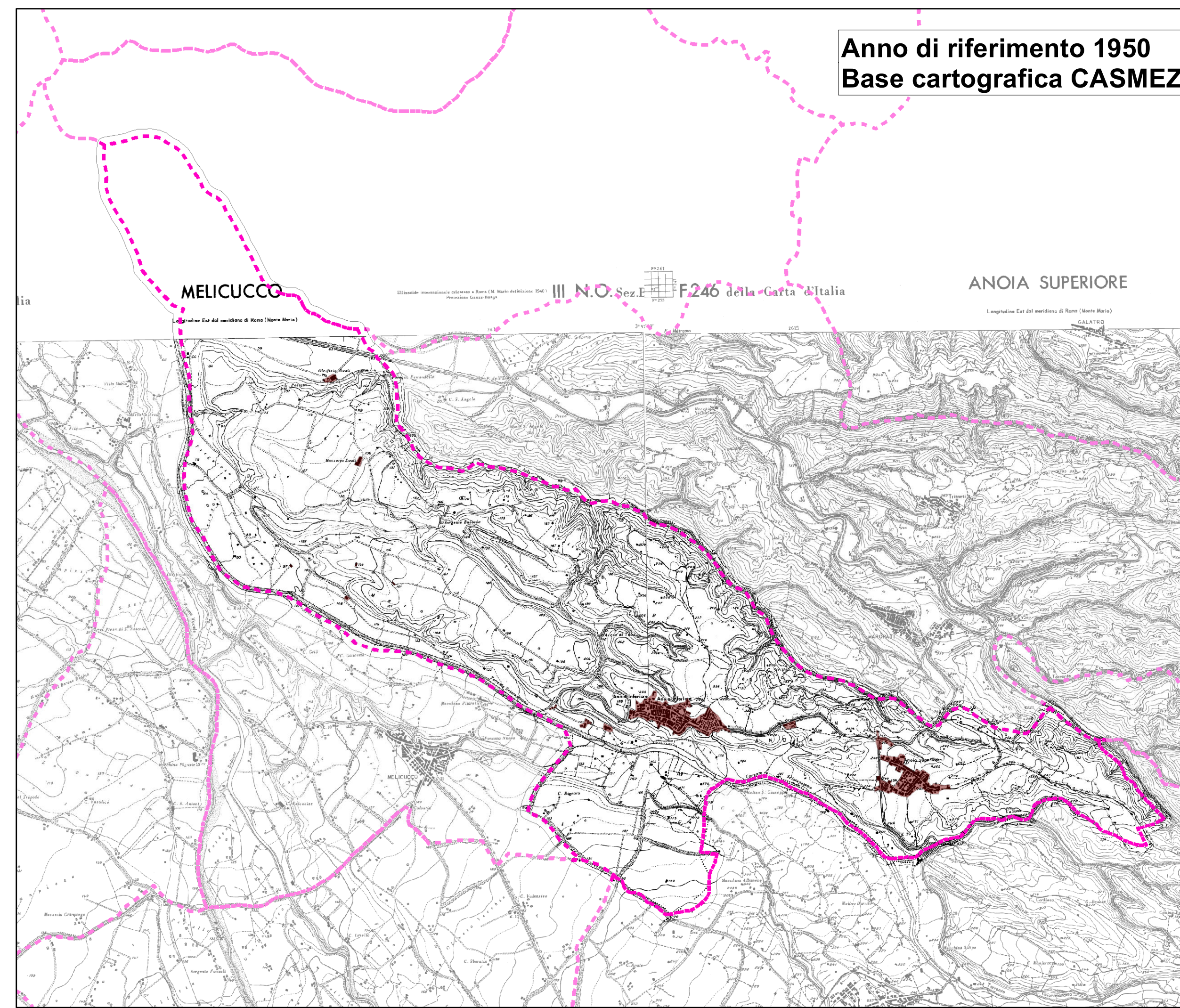
Elaborato  
**QMI - Analisi interpretativa del sistema insediativo**

Esperti Incaricati

Componente Urbanistica  
Arch. Angelo Chiaro  
Arch. Antonino Cosma

Componente Geologica  
Geol. Antonio Mercuri  
Componente Agronomica  
Agr. Michelangelo Rizzo

Marzo 2025

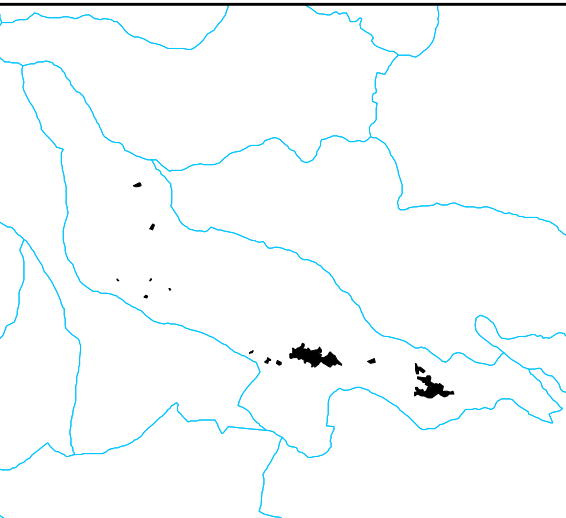


**Legenda** Scala 1:10.000

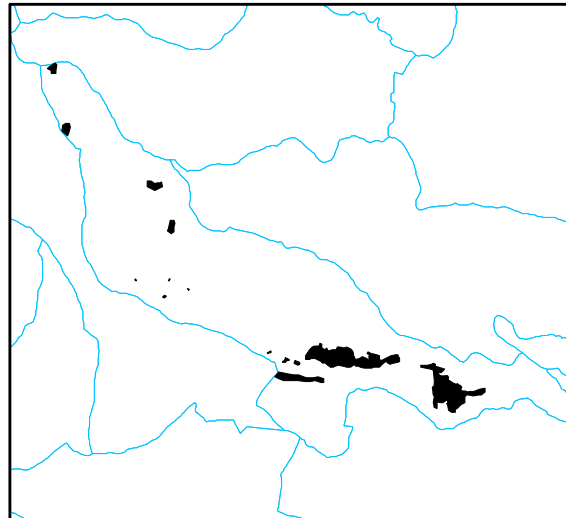
Evoluzione del sistema insediativo

ANNO

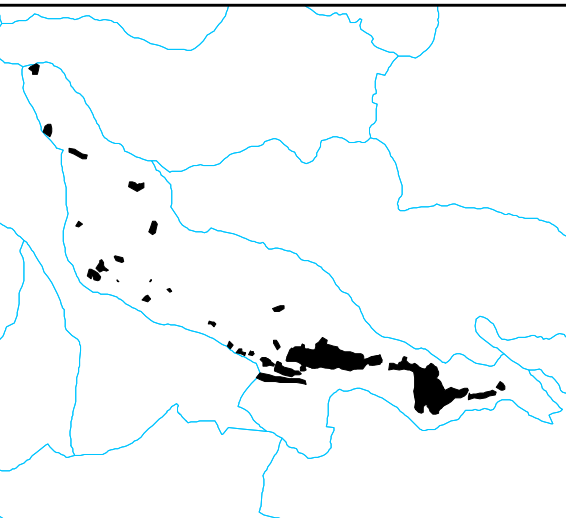
- 2024
- 2007
- 1980
- 1950
- CONFINI COMUNALI



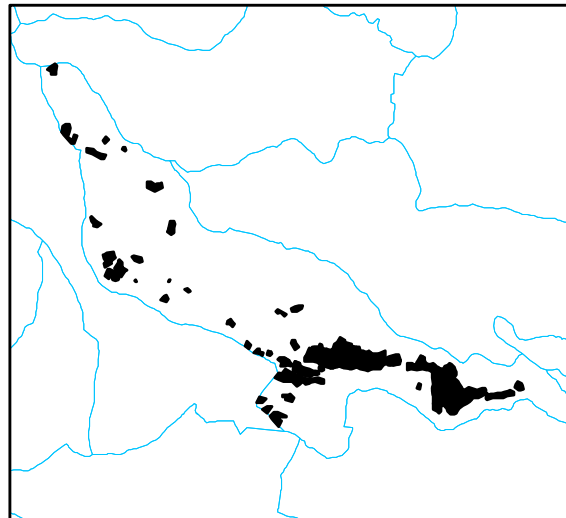
Anno di riferimento 1950  
Base cartografica CASMEZ



Anno di riferimento 1980  
Base cartografica IGM



Anno di riferimento 2007  
Base cartografica CTR



Anno di riferimento 2024  
Base cartografica Ortofoto 2024

0 200 400 800 Metri

